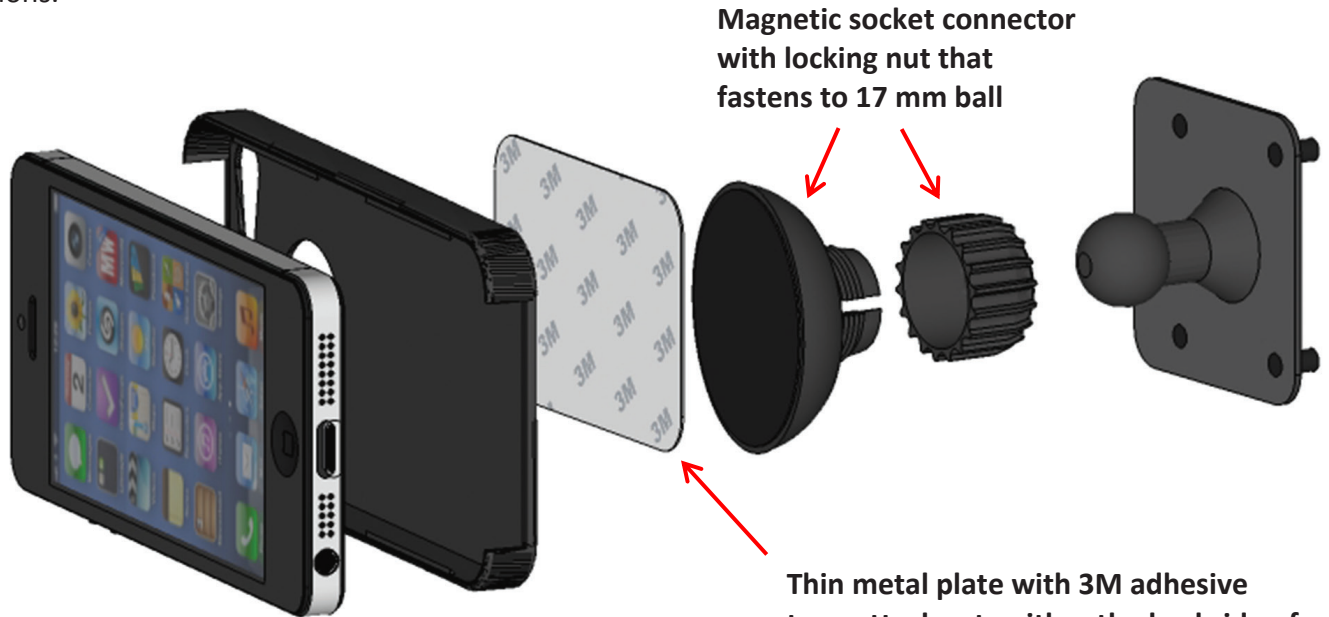




The PCAR MOUNT® Universal Magnetic Mount System provides a convenient option for securing your smartphone in a perfect driver-line-of-sight location in your classic Porsche 911 ... ***without the need for a phone docking cradle***. The system includes (1) a magnetic connector with locking nut that attaches to the 17 mm ball adapter in the PCAR MOUNT kit and (2) a thin metal plate with 3M adhesive that attaches to your smartphone or smartphone case. However, if you prefer “mechanical” docking for your smartphone, check out the Accessory Bulletin on our website for guidance on these phone mounting options.



Magnetic socket connector with locking nut that fastens to 17 mm ball

Thin metal plate with 3M adhesive tape attaches to either the backside of the naked phone, inside surface of the phone case behind the phone, or to the outside surface of the phone case

IMPORTANT TIP: To achieve a strong bond of the metal plate to a surface, first clean the target surface with an alcohol wipe (included), let the solvent flash and then press and hold the plate in position for at least a minute before use.

3 Ways to Attach the Metal Plate with 3M Adhesive



Back Surface of the Naked Phone

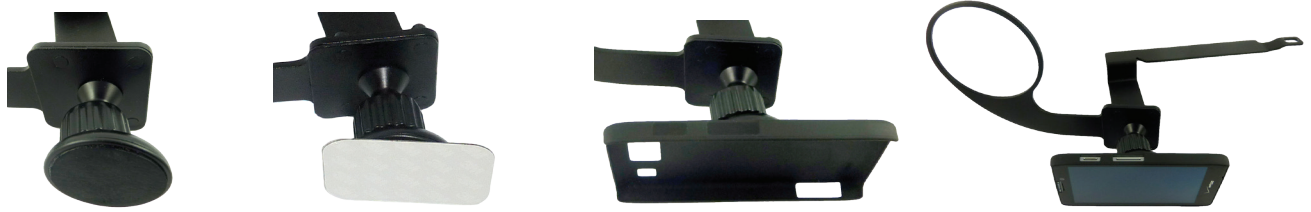


Inside Surface of the Phone Case
(works best with thinner cases)



Back Surface of the Phone Case

PCAR MOUNT Universal Magnetic Mount System (with Droid RAZR MAXX HD Smartphone)



What About Magnets and Smartphone Operation

Magnetic covers, stands, and mounts have been used extensively and extendedly with tablets and smartphones without problems. A great many 3rd party user reviews and testing of such products have confirmed that magnetic mounts have no interfering or harmful effects on phone function, operations, or data integrity. The internal electronics, LED screen, and flash drive storage of these devices are not sensitive to magnetic fields and there has been no interference with device performance or scrambling of data. The one incremental area of reported operational conflict has to do with certain smartphone apps for digital directional compass headings. GPS navigation apps are not affected, as these systems use satellite triangulation not compass readings for location and direction.

Check out this link for more information:

<http://blog.first4magnets.com/will-a-magnet-damage-my-smartphone/>

Three Pathways to Mount Your Device

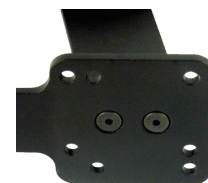
The PCAR MOUNT is purpose built for the classic Porsche 911 and is engineered for universal compatibility with Mobile Electronic Developments (MEDs) ... today's devices and those yet to come. We now have three pathways to mount your device: **(1) universal magnetic mounting** described herein; **(2) ball/socket attachment** to the milled aluminum 17 mm swivel ball *plate* in the kit which accepts many portable GPS appliances and most smartphone cradles/holders/docking units; and **(3) direct cap screw attachment** to the AMPS platform on the bracket (behind the 17mm ball plate) which is configured with the industry-standard, rectangular-spaced, AMPS hole pattern (38mm x 30mm) and accepts all kinds of device mounting hardware and adapters.



Universal Magnetic
Connector



17mm Swivel Ball
Plate



AMPS Hole-Pattern
Platform (38mm x 30mm)